

Ranelagh  
Gardens  
Mansions Ranela  
Gardens



# Ranelagh Gardens

## Mansions Ranelagh Gardens

**£2 450 Per Month**

A light and airy two-bedroom apartment, set on the ground floor of this purpose-built block of flats which is located adjacent to Putney Bridge Station.

The flat comprises spacious living room with dining area, separate kitchen, 2 well-proportioned bedrooms, shower room with separate WC. It also benefits from a south-facing communal patio area.

The local buses and underground station give access into Central London and surrounding areas. The recreational amenities along the river and in Bishops Park are a short stroll away, as are local cafes, shops and restaurant in both Fulham and Putney.

Local Authority  
Hammermsith and Fulham

Council Tax Band D

EPC Rating C

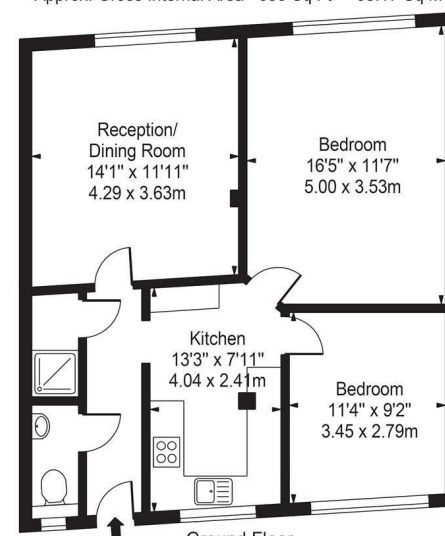
### Contact

0208 994 5164

karen@xppm.co.uk

xppm.co.uk

Ranelagh Garden Mansions  
Approx. Gross Internal Area 680 Sq Ft - 63.17 Sq M



This floor plan should be used as a general outline for guidance only and does not constitute in whole or in part an offer or contract.  
Any intending purchaser or lessee should satisfy themselves by inspection, searches, enquiries and full survey as to the correctness of each statement.  
Any areas, measurements or distances quoted are approximate and should not be used to value a property or be the basis of any sale or let.